
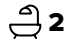
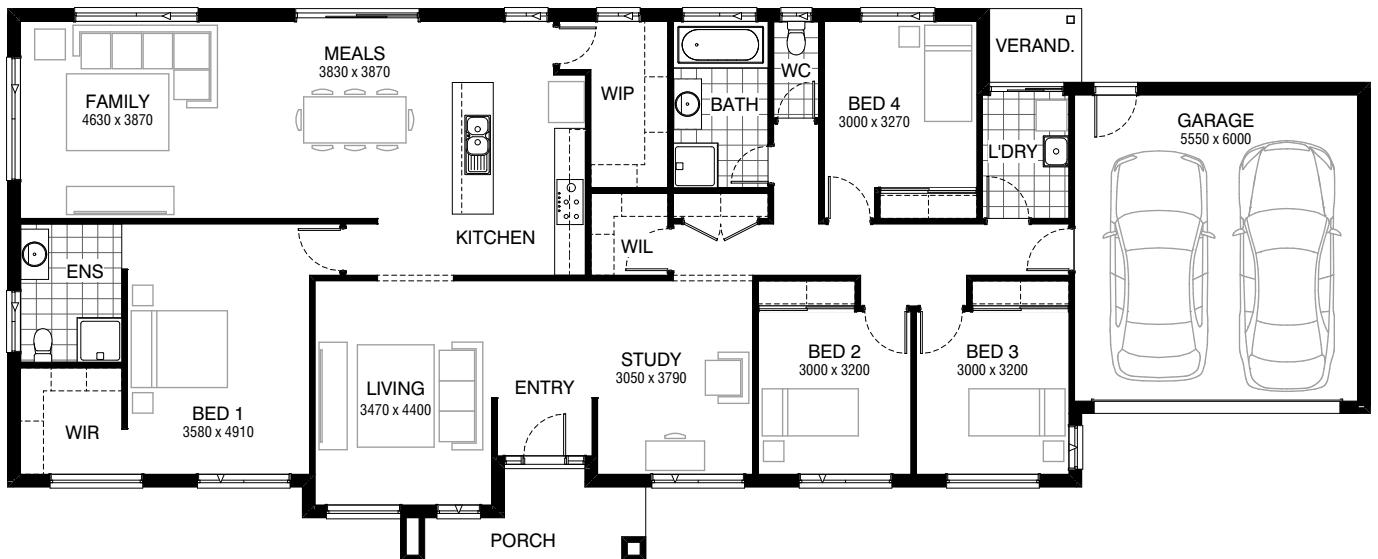


Total squares **25.9sq**

 **4**  **2**  **2**



**FLOORPLAN OPTIONS**

All available ready-to-go floorplan options for this design can be viewed on the following pages, or visit [www.burbank.com.au](http://www.burbank.com.au).

**Facades available:**

Drysdale, Arkley, Haring	
Dowd, Nolan	
<b>Overall home width</b>	<b>26.63m</b>
<b>Overall home length</b>	<b>10.79m</b>




Residence	194.5m <sup>2</sup>	20.9sq
Garage	37.5m <sup>2</sup>	4.0sq
Verandah	2.6m <sup>2</sup>	0.3sq
Porch	6.2m <sup>2</sup>	0.7sq
<b>Total</b>	<b>240.8m<sup>2</sup></b>	<b>25.9sq</b>

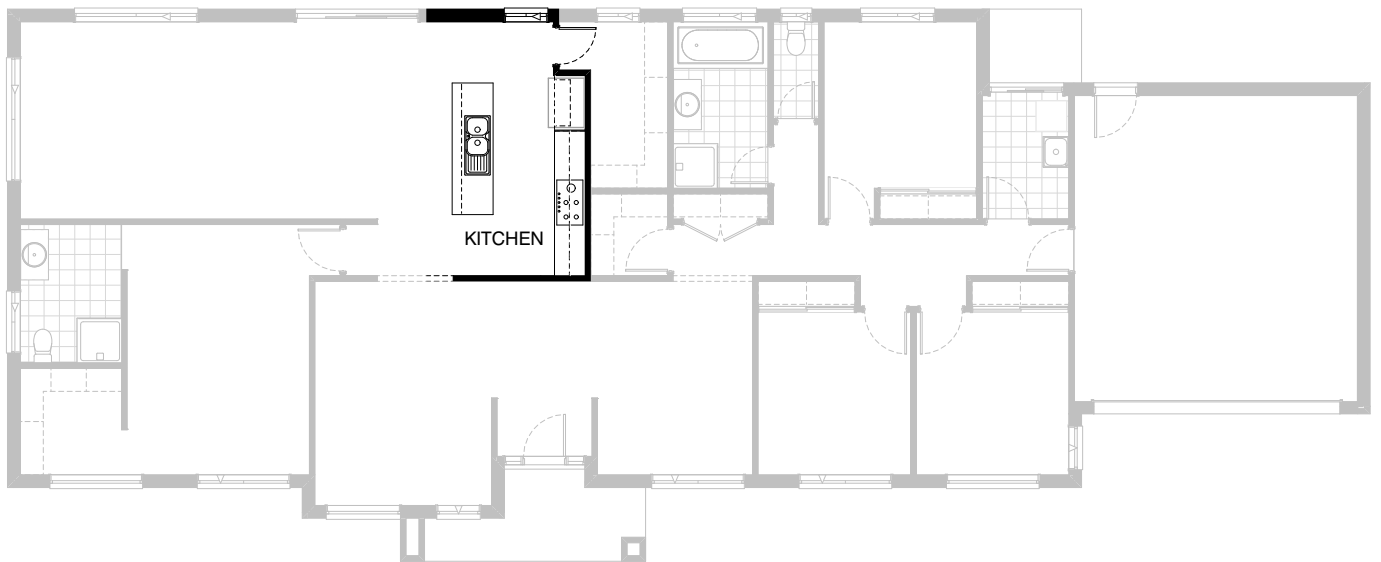
Listed details based on Drysdale façade floorplan (illustrated)

\*Copyright conditions. All photos and illustrations are representative only. Floor plans and specifications may be varied by Burbank without notice, the dimensions are diagrammatic only and a Building Contract with final drawings will display correct dimensions and detail. All designs are the property of Burbank and must not be used, reproduced, copied or varied, wholly or in part without written permission from an authorised Burbank representative. Copyright Burbank Australia Pty Ltd. ABN 91 007 099 872. Builders Registration Number CDB-U-52603.

**Call 13 BURBANK**  
**Visit [burbank.com.au](http://burbank.com.au)**

**FLOORPLAN OPTIONS**




 **4**    **2**    **2**

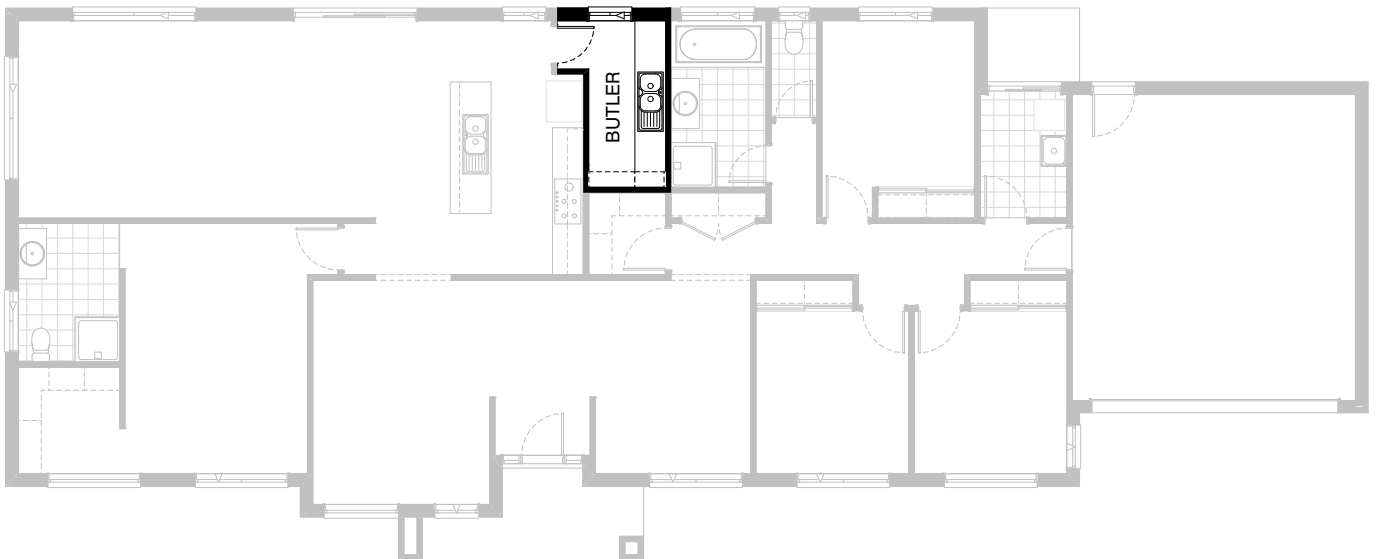


**Option K-1**

Provide kitchen upgrade with 1no.  
open shelf above refridgerator space

FLOORPLAN OPTIONS




 **4**    **2**    **2**

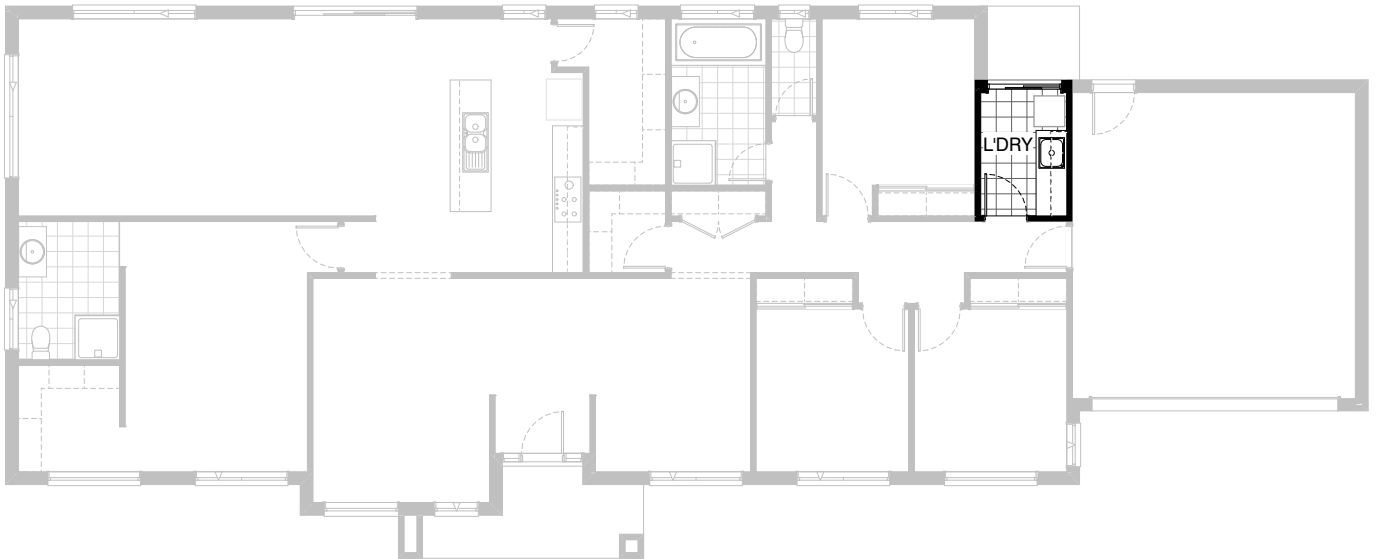


**Option K-2**

Provide Butlers Option in lieu of standard WIP with additional 3no. 900mm base cupboards, 1no. 150mm base cupboard, double bowl sink and 5no. laminated wall to wall shelves with additional tiled splash back and bench top to suit in lieu of standard.

**FLOORPLAN OPTIONS**




 **4**    **2**    **2**

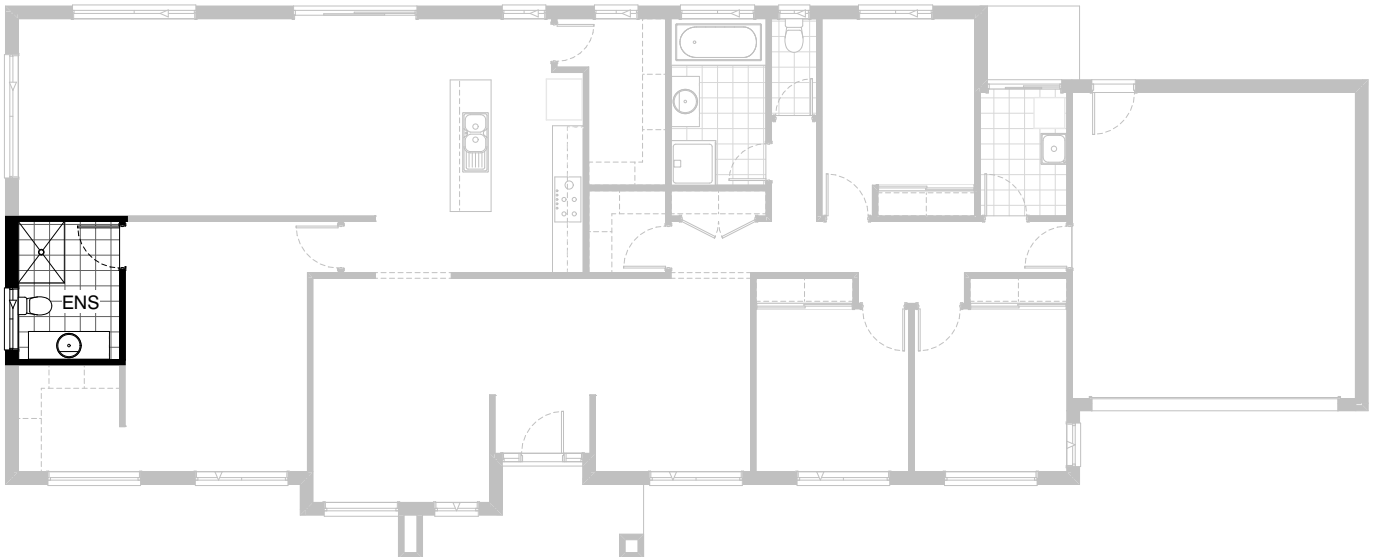


**Option LD-1**

Provide Laundry upgrade with laminated insert trough, 2no. 800mm base cupboards and 2no. 800mm overhead cupboards with additional tiled splash back and bench top to suit.

FLOORPLAN OPTIONS




 **4**  **2**  **2**

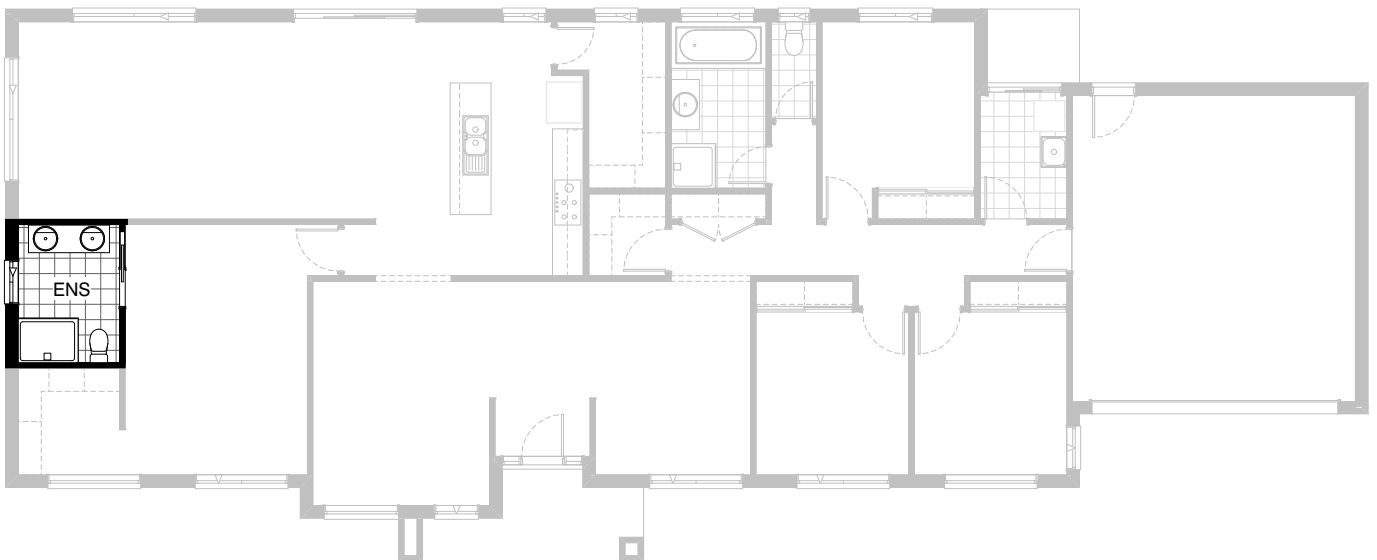


**Option ENS-1**

Provide Ensuite upgrade with 900mm x 1200m tiled shower base,  
1no. 1582mm wide vanity basin in lieu of standard and 1no. 820  
flush panel hinged door to suit.

**FLOORPLAN OPTIONS**




 **4**    **2**    **2**

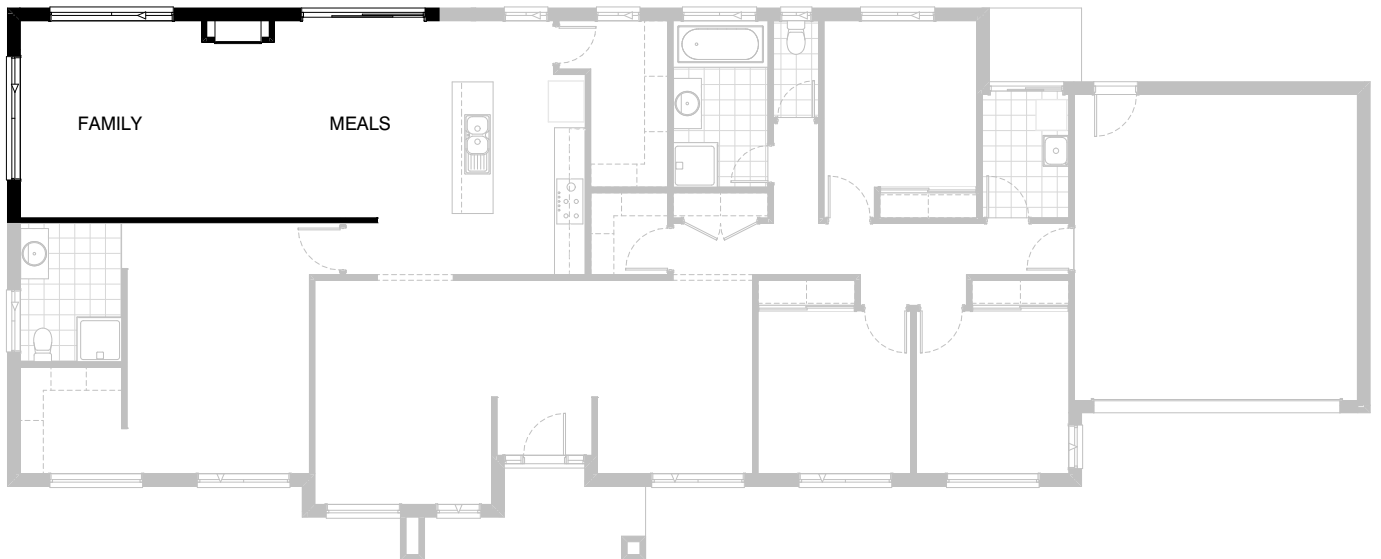


**Option ENS-2**

Provide Ensuite upgrade with 1no. 900mm x 1200m polymarble shower base, 1no. 1782mm wide vanity unit with 2no. basins in lieu of standard and 1no. 720 cavity sliding door to suit. Provide 1200mm x 850mm aluminium sliding window in lieu of 1200mm x 1210mm aluminium sliding window

FLOORPLAN OPTIONS




 **4**    **2**    **2**



**Option IP1-1**

Provide Real Flame Inspire 900 gas fireplace, 400mm off floor level in a 1400mm x 420mm boxed out plaster wall with a 4 sided black fascia to Family/Meals room rear wall.

FLOORPLAN OPTIONS

 **4**    **2**    **2**






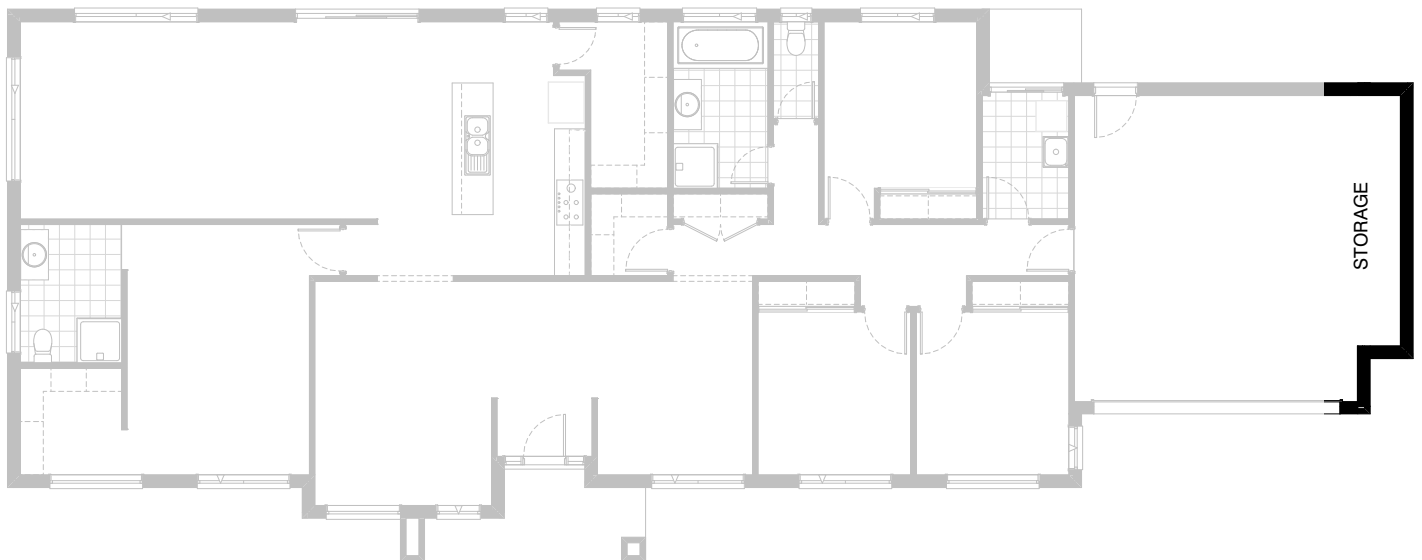
**Option EP1-1**

Provide Alfresco to rear of Family/Meals with tiled hip roof, structural concrete floor, light point and 3no. 470mm x 470mm brick piers.  
Increases area by 27.96m<sup>2</sup>.  
Increase length by 3240mm.



**FLOORPLAN OPTIONS**




 **4**    **2**    **2**

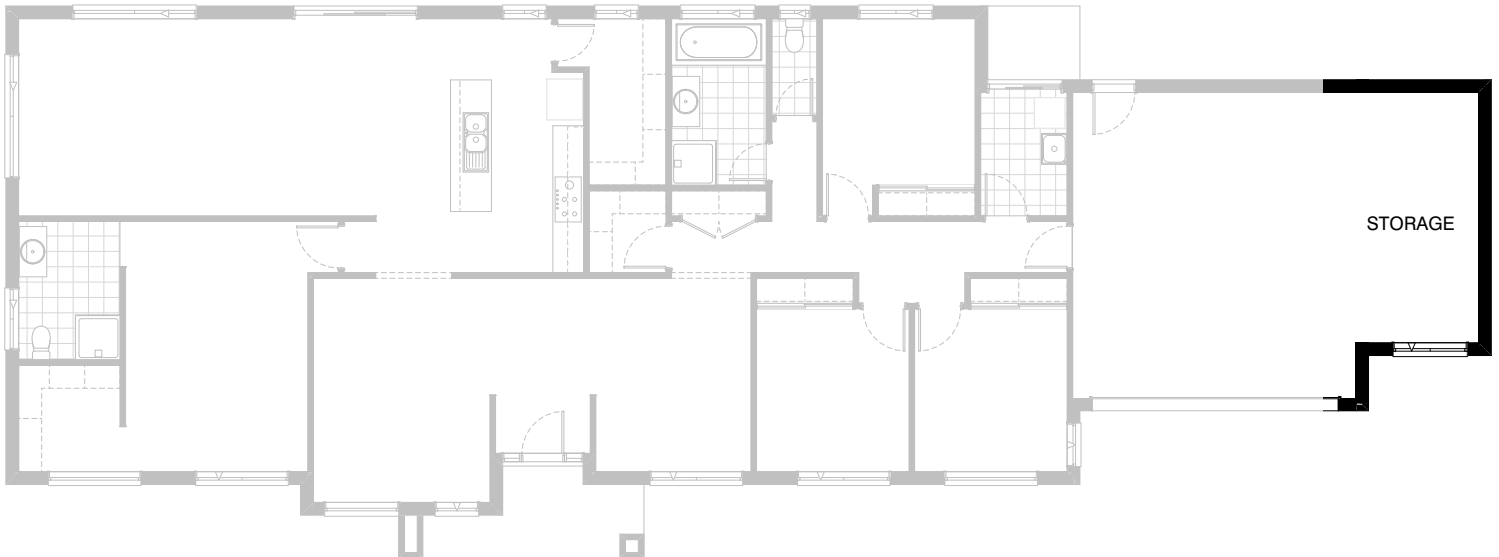


**Option G-1**

Provide extension to Garage to create additional Storage area.  
Increases area by 4.53m<sup>2</sup>.  
Increases width by 840mm.

FLOORPLAN OPTIONS




 **4**    **2**    **2**



**Option G-2**

Provide extension to Garage to create additional Storage area.  
Increases area by 13.51m<sup>2</sup>.  
Increases width by 2400mm.

FLOORPLAN OPTIONS

 **4**    **2**    **2**



**Option G-3**

Provide triple car Garage including additional  
garage door as per colour selection.  
Increases area by 23.69m<sup>2</sup>.  
Increases width by 3600mm.